



INSTRUCTIONS FOR: DHCLO -55C 19-24 BMW S 1000 RR

PERFORMANCE PRODUCTS

Note: These clip on are designed for use on a close course and not for use on street bikes.

1. Remove oem handlebars
2. replace oem clip on with driven cuff using oem screws and locktite (use oem torque values)
3. Install clamp assembly on fork leg. (note right and left clamps)
4. Install switch gear and lever assemblies. (drilling for switch gear must be done by installer)
5. Adjust rotation of clip on, and align using hash marks.
6. Test lock-to-lock movement, making sure bars are clear from all obstructions.
7. Torque all bolts to 6-8 ft./lbs. max, must use blue Loctite.
8. To raise the clip-on a small amount of material needs to be removed from the triple clamp castings bottom near the bolt (see image on reverse side)



Please contact Driven Racing Directly with any issues or concerns:

Tel: 818-775-0041

Email :INFO@DRIVENRACING.COM

DRIVEN REQUIRES THAT THIS PRODUCT BE INSTALLED BY A CERTIFIED TECHNICIAN

**This product is sold for off-road use only and is not intended for use on public roads. The purchaser of this product releases Driven Performance Products and their distributors of any liability pertaining to installation of purchased parts. Purchaser recognizes that any alteration or modification to the vehicle may increase the risk of injury or accident. For off road/closed course use only.*



INSTRUCTIONS FOR: DHCLO -55C 19-24 BMW S 1000 RR

PERFORMANCE PRODUCTS

Note: These clip on are designed for use on a close course and not for use on street bikes.

1. Remove oem handlebars
2. replace oem clip on with driven cuff using oem screws and locktite (use oem torque values)
3. Install clamp assembly on fork leg. (note right and left clamps)
4. Install switch gear and lever assemblies. (drilling for switch gear must be done by installer)
5. Adjust rotation of clip on, and align using hash marks.
6. Test lock-to-lock movement, making sure bars are clear from all obstructions.
7. Torque all bolts to 6-8 ft./lbs. max, must use blue Loctite.
8. To raise the clip-on a small amount of material needs to be removed from the triple clamp castings bottom near the bolt (see image on reverse side)



Please contact Driven Racing Directly with any issues or concerns:

Tel: 818-775-0041

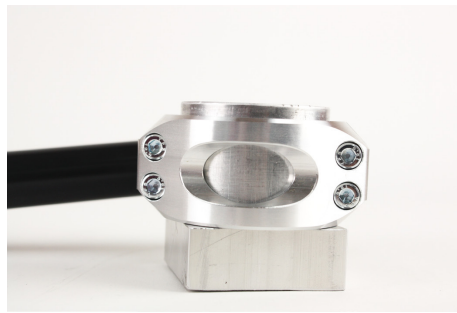
Email :INFO@DRIVENRACING.COM

DRIVEN REQUIRES THAT THIS PRODUCT BE INSTALLED BY A CERTIFIED TECHNICIAN

**This product is sold for off-road use only and is not intended for use on public roads. The purchaser of this product releases Driven Performance Products and their distributors of any liability pertaining to installation of purchased parts. Purchaser recognizes that any alteration or modification to the vehicle may increase the risk of injury or accident. For off road/closed course use only.*



fork leg engagement).
(Clamp doesn't have 100%
fork leg engagement).



CORRECT
(Clamp have 100% fork leg
engagement).



use oem screws
with blue locktite

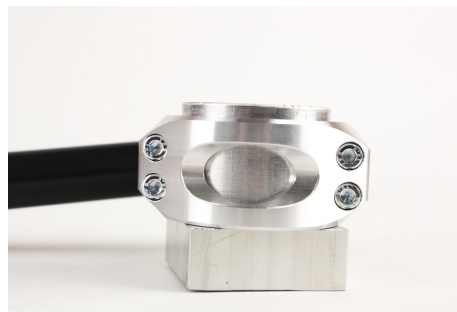


remove 1/8"

When transporting a bike do not use clip on bars as tie downs anchors !! clip on may snap.



fork leg engagement).
(Clamp doesn't have 100%
fork leg engagement).



CORRECT
(Clamp have 100% fork leg
engagement).



use oem screws
with blue locktite



remove 1/8"

When transporting a bike do not use clip on bars as tie downs anchors !! clip on may snap.

