

FOR OFF ROAD/RACE USE ONLY!



Driven TT BMW S 1000 RR 2020

Part # DRP-738

Installation Instructions

Removal of Left Side

1. Remove shift rod and remove shift pedal
2. Remove shift side plate (left side)
3. Remove exhaust hanger bolt
4. Remove heel guard revealing master cylinder
5. Remove frame bracket
6. Remove right side plate
7. Disconnect master cylinder and plunger from bracket

Tools Required

- 8mm Open End Wrench
- 5mm Hex Key
- 6mm Hex Key
- 8mm Hex Key
- Needle Nose Pliers
- Screw Driver
- Blue Loctite
- Impact Gun

THE USE OF BLUE LOCTITE IS REQUIRED ON ALL MOUNTING HARDWARE!

Installation

Left Side Installation

1. Install left side foot peg into frame bracket
2. Install shift pedal
3. Connect shift rod into shift pedal in the desired position (std or gp shift) see picture
4. Connect left side bracket
5. Connect frame bracket
6. Tighten all bolts and nuts (use blue Loctite)

TORQUE VALUES

- M5 = 6FT/LBS
- M6 = 10FT/LBS
- M8 = 25FT/LBS
- M10 = 45FT/LBS

Right Side Installation

1. Install right side foot ped into frame bracket
2. Install plunger assembly into brake pedal
3. Connect master cylinder into frame bracket
4. Connect master cylinder and brake return spring
5. Connect frame bracket into bike using supplied bolts

Note. Use blue Loctite on all bolts Including all rear set and mounting points torque all bolts and recheck after 500 miles.

Before riding your bike make sure rear brake switch is working properly and nothing is impeding free movement.

THIS PRODUCT IS INTENDED TO BE INSTALLED BY A CERTIFIED TECHNICIAN*

FOR OFF ROAD/RACE USE ONLY!



Brake Side



Reuse this part



Shift side Std



Shift side GP shift

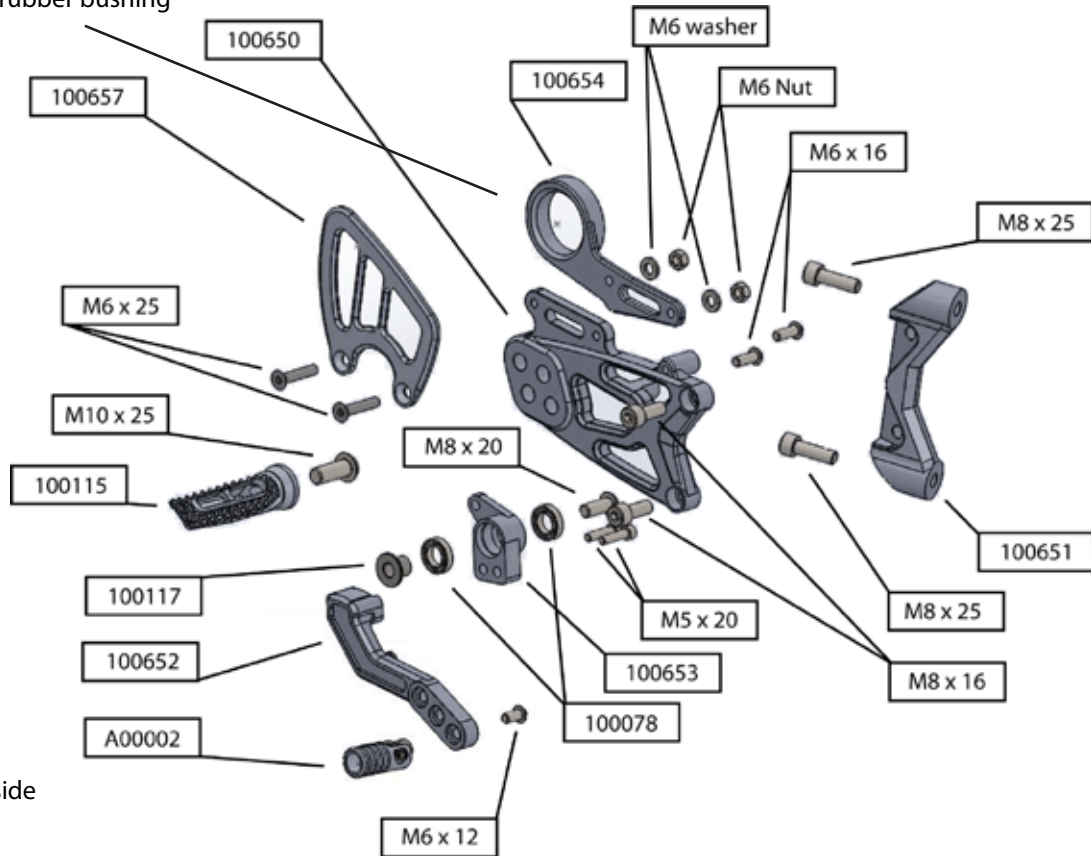
THIS PRODUCT IS INTENDED TO BE INSTALLED BY A CERTIFIED TECHNICIAN*

FOR OFF ROAD/RACE USE ONLY!

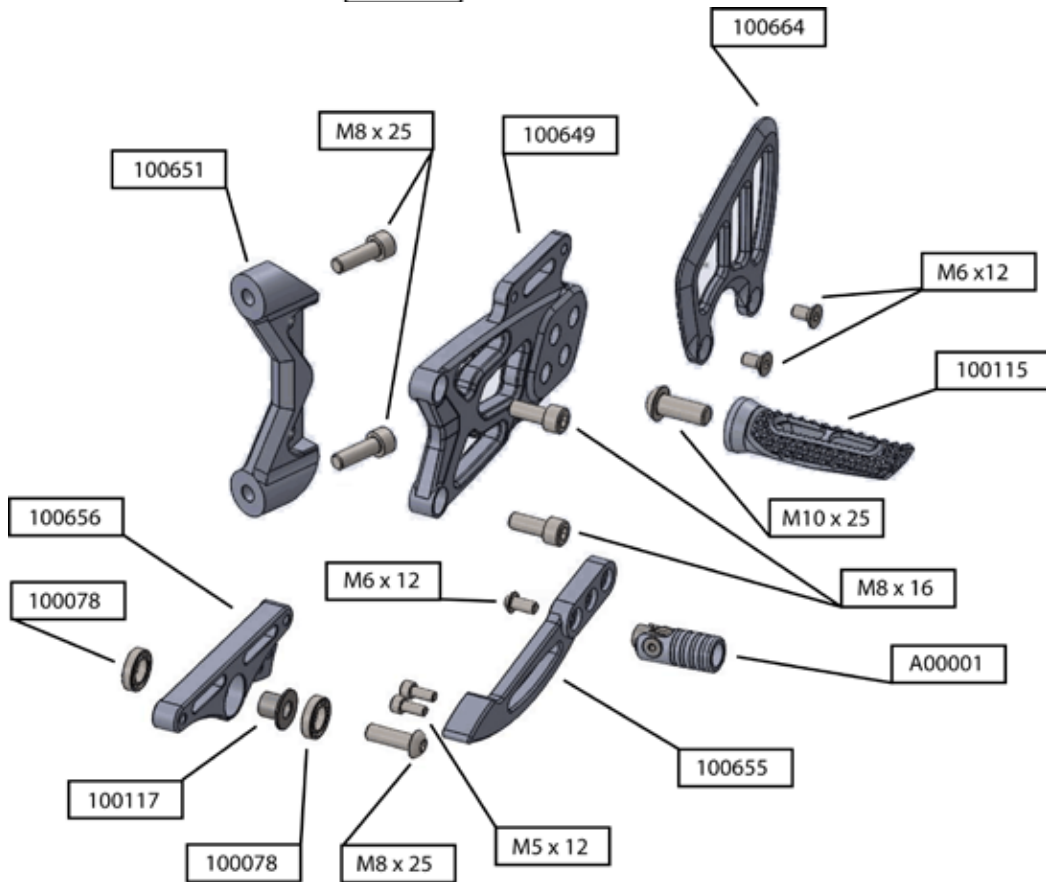


DRIVEN PERFORMANCE PRODUCTS

Note: Use OEM rubber bushing



*Right side



*Left side

THIS PRODUCT IS INTENDED TO BE INSTALLED BY A CERTIFIED TECHNICIAN*